



# BHISHM CUBE

## every life matters



**BHISHM**



Bharat Health Initiative for Sahyog Hita & Maitri





# वसुधैव कुटुम्बकम्

**The World is One Family**  
**OUR PROFOUND PHILOSOPHY**  
**OF EMBRACING ONENESS**



*This principle highlights the interconnectedness and oneness of all living beings, cultures & religions transcending borders*







# TRANSLATING OUR PHILOSOPHY INTO ACTIONABLE INITIATIVES



“VASUDHAIVA KUTUMBAKAM ( One Earth, One Family)” transcends mere philosophy and outreach embodies our unwavering commitment. Our contribution through PROJECT AAROGYA MAITRI involving crucial medical assistance, serves as a testament to our global mission of embracing oneness.





# THE EVOLVING GLOBAL GEOPOLITICAL LANDSCAPE



The geopolitical landscape is undergoing a dynamic transformation shaped by emerging technologies and evolving global alliances. Climate change and global pandemics necessitate collaborative solutions that transcend traditional borders



# THE IMPACT OF NATURAL DISASTERS & MAN-MADE CRISES ON COMMUNITIES & ECOSYSTEMS

**10 x Rise in Frequency of Global Natural Disasters**

**220 Million affected by Disasters in 2020-21**

**45,000 Fatalities Caused by Natural Disasters Globally**

**28 Year High Deaths Resulting from Conflict Related Incidents**



**US\$ 223.80 Billion Economic Losses from Global Natural hazards & Disasters in 2022**

**387 Global Natural Hazards & Disasters in 2022**

Sources:- #1. Centre for Research on the Epidemiology of Disasters #2. Centre for Research on the Epidemiology of Disasters #3. Our world in data #4. The Peace research institute Oslo #5. Data from the institute of Economics and Peace #6. EM - DAT





# DISASTER MANAGEMENT CYCLE

**PREPARATION**

**DISASTER**

**RESPONSE**

**RECOVERY**

**MITIGATION**





# LEARNING FROM DISASTER MANAGEMENT

Care Team Support



Treatment In Emergency



First Aid On The Spot



Time To Reach



Mishap







# LEARNING FROM DISASTER MANAGEMENT

Among 10,000 individuals affected by a conflict or disaster and significantly 2% become casualty patients.



A medical relief kit must have the capacity to provide comprehensive assistance, supporting up to 200 casualties in times of need.







# INTEGRATING OUR PROFICIENCY AND EXPERTISE IN



## SCIENCE

Reason and rationality, driven by innate curiosity, births the realms of science, intellect, and intelligence, enriched further through the crucible of experience.

## TECHNOLOGY

Innovation and research, has propelled advancements across space exploration to medical breakthroughs, a refined testimony to human intellect and accomplishment.



## PHARMACEUTICAL EXPERTISE

Renowned for its vast pharmaceutical industry, India has emerged as one of the leading producers and suppliers of high quality Pharma-products worldwide through the **PROJECT AAROGYA MAITRI**.



# THE FOUNDATIONAL PILLARS OF BHARAT HEALTH INITIATIVE FOR SAHYOG HITA & MAITRI (BHISHM)

**Treating within the Golden Hour**



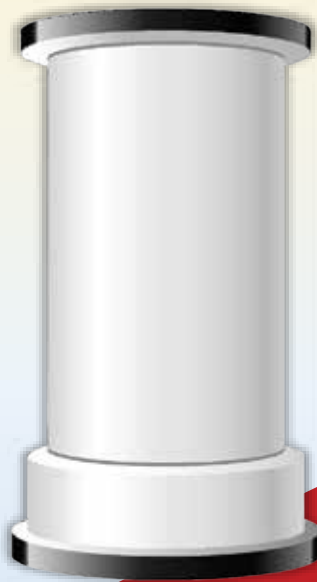
**Delivering First Line of Treatment**



**Preserving & Safeguarding Lives**



**BHISHM Modular Trauma Kit**



**Timely Assistance and Diagnostics**



**Discerning Requirement**



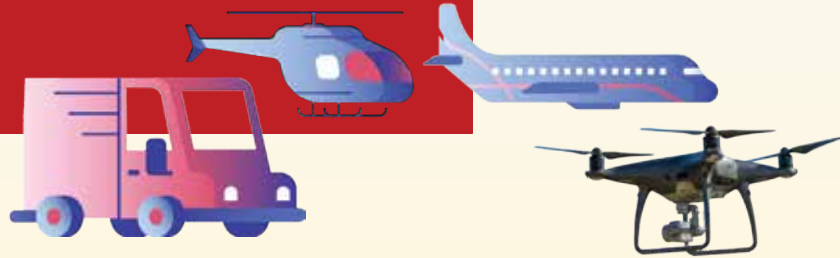
**Formulating Solution**





# ADVANTAGES OF BHISHM CUBE & APP

**EASY DEPLOYABILITY  
(AIR, SEA, LAND, DRONE)**



## BHISHM



Bharat Health Initiative for Sahyog Hita & Maitri



**BHISHM APP HELPS ANYONE TO PROVIDE QUICK ASSISTANCE**

**TECHNOLOGY INTERVENTION TO PREVENT WASTAGE BY EASY TRACKING RFID**

**EASE OF OPERATIONS & DEPLOYMENT**



**ANAESTHESIA STATION**

**HELPING WITH MEDICINE & PARAMEDICS WITH THEIR SURVIVAL**



**GENERATOR**



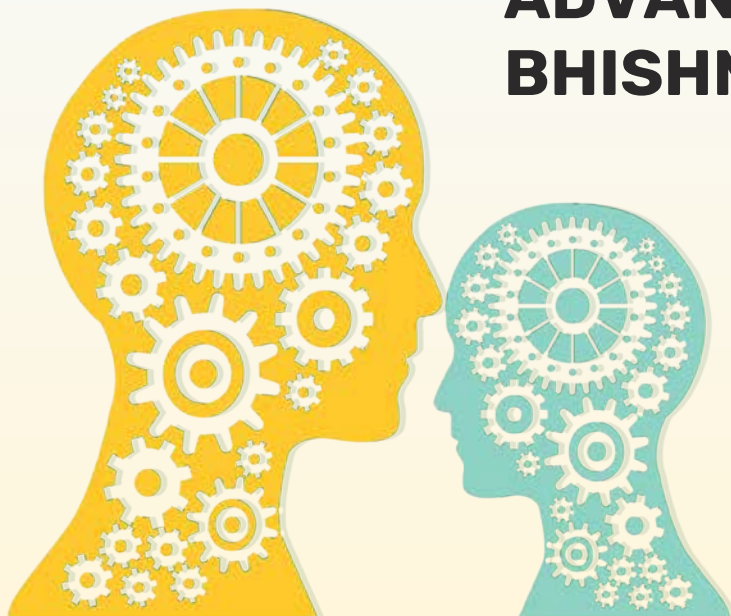
**POWER STATION**



**SURVIVOR STATION**



# ADVANTAGES OF BHISHM CUBE DESIGN



Ease of mobility ensuring quick set-up/wrap up and relocate



Self sufficient to treat a broad spectrum of injuries



Low reliance on trained professionals to execute and provide basic first aid



Minimal or No Waste





# INTRODUCING

# प्रोजेक्ट आरोग्य लोको

## **BHISHM CUBES** **WORLD-CLASS MANUFACTURING** **TECHNOLOGY IN HEALTH CARE**



**Mobile  
Modular  
Trauma Kit**





# प्रोजेक्ट आरोग्य लवोणे

## HUMANITARIAN ASSISTANCE & DISASTER RELIEF (HADR)







# प्रोजेक्ट आरोग्य लोको



**MOBILE  
MODULAR  
TRAUMA KIT**

**IN TIMES OF CRISIS, WE NOT ONLY ENSURE  
COMPREHENSIVE DELIVERY OF AID  
BUT ALSO INSPIRE HOPE**

**BUILT ON GLOBAL  
STANDARDS**

**BREAKTHROUGH DESIGN  
THAT OFFERS SEAMLESS  
MOBILITY**

**QUALITY CARE THROUGH  
ADVANCED MEDICAL EQUIPMENT**

**OPTIMISED  
FUNCTIONALITY**

**CUTTING EDGE  
TECHNOLOGY**



# प्रोजेक्ट आरोग्य लोको

**BUILT TO GLOBAL STANDARDS  
BUILT ON APPROVED TRAUMA PROTOCOLS**

**TACTICAL COMBAT CASUALTY CARE  
(TCCC)**

**M-Massive Hemorrhage, A-Airway, R-Respiratory,  
C-Circulation and H-Hypothermia  
(MARCH)**

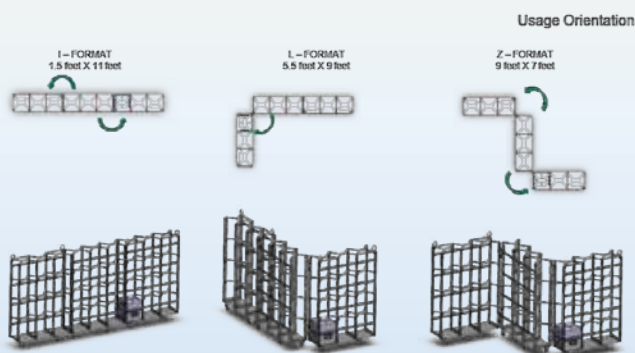
**Advanced Trauma Life Support  
(ATLS)**



# प्रोजेक्ट आरोग्य लोको

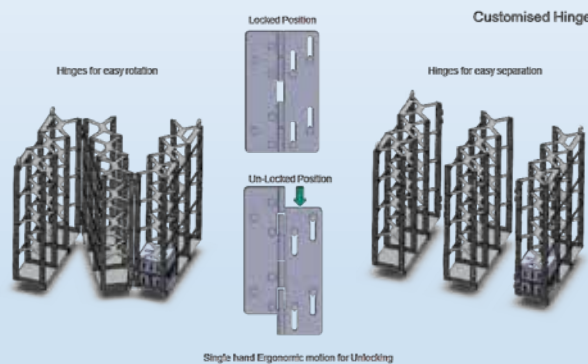
## BREAKTHROUGH DESIGN THAT OFFERS SEAMLESS MOBILITY

The BHISHM Modular Trauma Kit includes mother cubes/pallets which encompass 36 mini cubes. Two Mother Cubes combine to form a brick to complete the BHISHM Modular Trauma Kit.



The cages and cubes that form the brick are sturdy, waterproof, corrosion-proof and military-grade with a unique locking system and tamper proof shelves for specific kits, easy to locate, draw out and use.

Cage can be easily dismantled in various combinations, based on availability of space.







# प्रोजेक्ट आरोग्य लवोणे



## THE LIFE SAVING CUBES

The life saving mini cubes are compact, sturdy and easily transportable.

Each Cube weighs below 20 kg and can be easily carried manually up to 1 km. Perfect for individuals or drones.

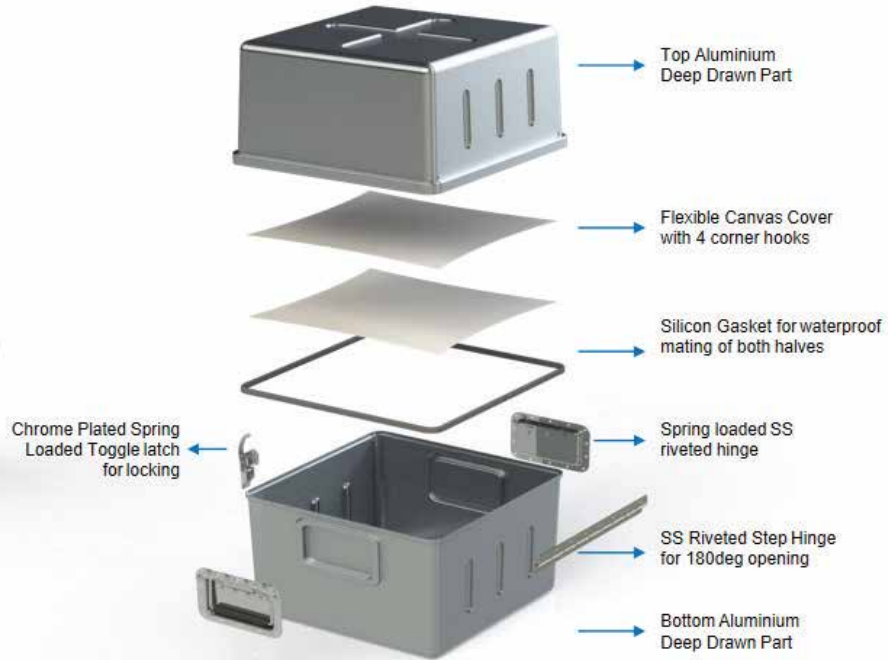
Each mini cube contains functional kits designed to address specific medical emergencies , particularly relevant in humanitarian assistance and disaster relief scenarios.





# प्रोजेक्ट आरोग्य कौत्रि

## MINI CUBES

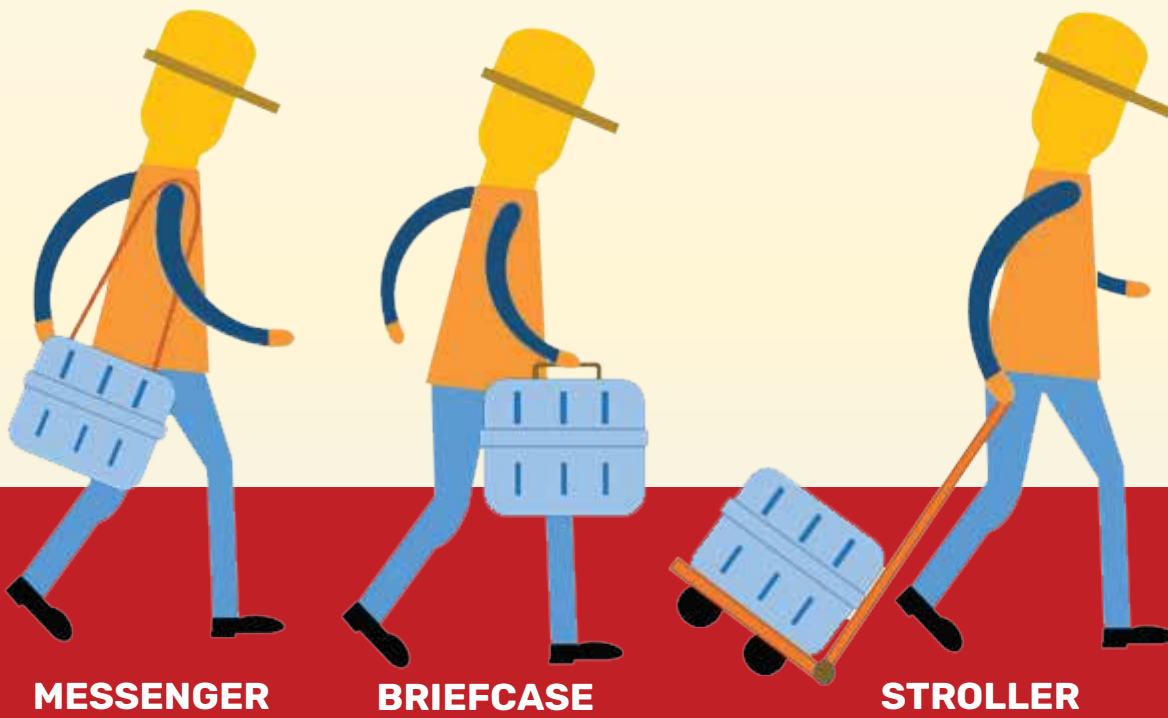


## EXPLODED VIEW OF THE CUBE

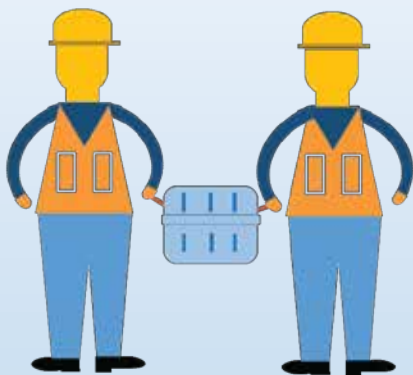


# प्रॉजेट आरोग्य लॉजर

## CUBE DIMENSIONS OPTIMISED FOR SIZE AND CARRYING CAPACITY



### TAG TEAM



These ergonomically designed cubes strike a harmonious balance between size and human carrying capacity.

They possess the nimbleness to be transported effortlessly by quadcopters, motor vehicles, pack animals, boats and more.



Each Cube measures 15 x15 x15 inches





# प्रोजेक्ट आरोग्य लवोणे

## BHISHM CUBE 1



## BHISHM CUBE 2





# प्रोजेक्ट आरोग्य लवोरो

## ADVANCED MEDICAL EQUIPMENT



**INFUSION PUMP**



**BLOOD & FLUID WARMING EQUIPMENT**



**MANUAL TOURNIQUET**



**DEFIBRILLATOR**



# प्रोजेक्ट आरोग्य लवोरो

## WHAT DOES THE BHISHM CUBE 1 ENTAIL?

Cube 1 is a self-sufficient unit equipped with survival, TCCC and basic ATLS tools. It can accommodate a crew of 5 for approximately 48 hours, providing essential provisions like food, water, shelter and power.



**TCCC**

**ATLS**



**SURVIVOR AID STATION**



**POWER STATION**



**COOKING STATION**





# प्रोजेक्ट आरोग्य लॉजिस्टिक्स

## BHISHM CUBE 1

### MINI CUBE SETS

- Crew Survival Set
- Crew Tent Set
- Survivor Food Set
- Survivor Water Set
- Generator Set
- Survivor Tent & Blanket Set
- Emergency Camp Light Set
- Patient Examination & Documentation Set
- Mass Casualty Triage Set
- Major Bleeding Control Set
- Airway Management Set
- Chest And Abdominal Injury Set
- Wound Dressing Set
- Burns Dressing Set
- Fracture Management Set
- Hypovolemic Shock Set
- Snake Bite Set
- Suction Set
- Oxygen Support Set
- Antibiotic & Pain Management Set
- Imaging Set
- AED Set
- Chest Tube Insertion Set
- Oral Medication Set
- Normal Saline Set
- Ringer Lactate (RI) Set





# प्रोजेक्ट आरोग्य लोको

## QUALITY CARE THROUGH ADVANCED MEDICAL EQUIPMENT

The BHISHM modular trauma kit Cube 1 encompasses some highly advanced medical equipment like a portable ventilator, multi-parameter monitor, blood warmer, high rate infusion device and ultrasound for focused assessment of trauma amongst many other advanced equipment.



**SURGICAL STATION**



**O2-MATIC**



**MULTI PARA MONITOR**



# प्रोजेक्ट आरोग्य लक्ष्मी

## WHAT DOES THE BHISHM CUBE 2 ENTAIL?

Cube 2 consists of advanced surgical tools, featuring an on-field OT for surgical interventions during times of casualties. This comprehensive setup encompasses an operating table, ventilator, anesthesia and other essential infrastructure components. This enables a surgical team to perform 10-15 basic surgeries per day, rendering critical medical aid during crises.



**ANAESTHESIA STATION**







# प्रोजेक्ट आरोग्य लोको

## BHISHM CUBE 2

### MINI CUBE SETS

- Patient Examination & Documentation Set
- Intubation Set
- Nebulisation Set
- Foleys Catheterisation Set
- Surgical Tracheostomy Set
- Surgical Wound Debridement Set
- Surgical Bleeding Control Set
- Surgical Suprapubic Cystostomy Set
- Burns Dressing Set
- Wound Dressing Set
- Antibiotic and Pain Management Set
- Hypovolemic Shock Set
- Anaesthesia Medication Set
- Suction Set
- Ventilator Set
- Oxygen Support Set
- Defibrillator Set
- Portable Lab Set
- Lab Card Test Set
- Imaging Set
- Surgical OT Light Set
- Surgical Operating Headlights Set
- Surgical Gown And Drape Set
- Surgical Instrument Set
- Surgical Autoclave Set
- Surgical Biomedical Waste Management Set
- Oral Medication Set
- Normal Saline (Ns) Set
- Ringer Lactate (RI) Set





# प्रोजेक्ट आरोग्य लोतरी

## OPTIMISED FUNCTIONALITY

The BHISHM CUBE incorporates to administer treatment based

TRIAGE priority stations upon patient criticality.



**PRIORITY I  
STATION**

The patient needs immediate attention for a critical life-threatening injury or illness and may be transported first for medical help.

**PRIORITY II  
STATION**



The individual has serious injuries that need immediate attention, they have a better chance of recovery than red-tagged patients.

**PRIORITY III  
STATION**



This indicates less serious or minor injuries that are non - life threatening.



# प्रोजेक्ट आरोग्य लोको

## OPTIMISED FUNCTIONALITY PATIENT FLOW

### TRIAGE

CATEGORY

1

EMERGENCY

RESUSCITATION AREA

CATEGORY

2

PRIORITY

ACUTE AREA

CATEGORY

3

NON-URGENT

WAITING AREA

### TREATMENT

RESUSCITATION

ACUTE AREA

FAST TRACK

### DISPOSITION

DISCHARGED

SHORT STAY UNIT

ADMITTED

TRANSFERRED

DECEASED





# प्रोजेक्ट आरोग्य लोतरी

## CUTTING-EDGE TECHNOLOGY

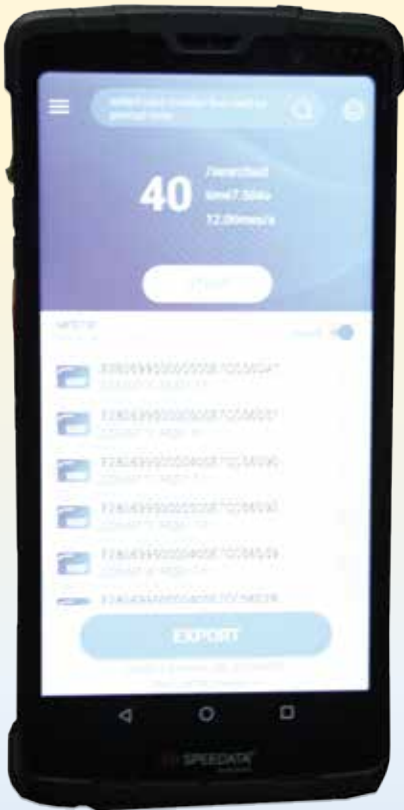


**BHISHM**

**APP**



Bharat Health Initiative for Sahyog Hita & Maitri



The BHISHM App, is a user friendly application developed for medical and paramedical professionals, stands as a comprehensive resource, offering invaluable information on the inventory of medicines, surgical supplies and Emergency Medical Equipment.

It is accompanied by a digital tablet that provides instructional videos related to the treatment and installation of the kit.

**SURGICALS**



**EQUIPMENT**



**FLUIDS**



**PHARMA**

**MISCELLANEOUS**



**VIDEOS**



# प्रोजेक्ट आरोग्य लवोणे

## CUTTING-EDGE TECHNOLOGY



The BHISHM Modular Trauma Kit is empowered with **RFID** Technology which provides effective product tracking inventory management and more.





# प्रोजेक्ट आरोग्य लोको

## RESCUE OPERATIONS



Potential Robotics Solution's Rescue Attachment is a groundbreaking Water Rescue Equipment designed for seamless operation in challenging conditions. With a speed of 15 km/h and a 200 kg load capacity, this remote-controlled buoy ensures swift and efficient rescue missions, even in stormy weather.

## O2-MATIC

Introducing O2-MATIC – PORTIA: Your instant, anywhere oxygen solution. This emergency portable oxygen generator is the world's first, producing 99.7% pure oxygen in just 40 seconds. Highly mobile, no power needed, and designed for continuous administration







# प्रोजेक्ट आरोग्य लोको

## CAPABILITIES FOR 200 PATIENTS



**40 x BULLET INJURIES**



**25 x MAJOR BLEEDS**



**25 x MAJOR BURNS**





# प्रोजेक्ट आरोग्य लोको

## CAPABILITIES FOR 200 PATIENTS

**20 x TRAUMATIC SURGERIES**




**10 x LONG LIMB FRACTURES**





**10 x MAXILLOFACIAL INJURIES**




**10 x SPINAL INJURIES**




**10 x CHEST INJURIES**








# प्रोजेक्ट आरोग्य लवोर्गे

## CAPABILITIES FOR 200 PATIENTS

**10 x HEAD INJURIES**



**10 x ABDOMINAL INJURIES**



**10 x PELVIC FRACTURES**



**20 x MISC. INJURIES URETHRA, NOSE, EYE, HAND ETC.**







# प्रॉजेंट आरोग्य लॉने

## BHISHM CUBE : FEATURES



Aligned with international trauma protocols, it proves invaluable in mass casualty incidents, be it in war or peace. It's organized structure ensures immediate impact, catering to both untrained aid providers and specialized surgical teams.



# प्रोजेक्ट आरोग्य लवाणे

## DEPLOYABLE IN DIVERSE SCENARIOS



Deployable in diverse scenarios, it ensures immediate impact and adaptability to specific needs. Utilizing a smart logistics chain, it comprises 100% Make in India components.



**Mobile  
Modular  
Trauma Kit**







# प्रोजेक्ट आरोग्य लॉजिस्टिक्स

## TRAUMA SOLUTION FOR UPTO 200 PATIENTS



Deployable by air, land, or sea, BHISHM CUBE also integrates modern software with smart logistics chain for easy replenishment. It is cost-effective and reusable as well, it guarantees long-term relevance in trauma response.







# प्रोजेक्ट आरोग्य लवोणे

## MINI CUBE



The mini cubes are lightweight, durable, waterproof boxes. Spacious and shockproof. They open in various configurations, facilitating airdrop, manual carry or drone transport to specific locations.



# प्रोजेक्ट आरोग्य लवोरो

## DEMO TO DEFENSE MINISTER AND HEALTH MINISTER



Hon'ble Minister of Defense Shri Rajnath Singh at the Aarogya Maitri Cube demonstration





# प्रोजेक्ट आरोग्य लवोत्सव

## DEMO TO DEFENSE SECRETARY AND DG NATIONAL DISASTER RELIEF FORCE



Members of the Aarogya Maitri team displaying to Defense Secretary & DG National Disaster Relief Force





# प्रोजेक्ट आरोग्य मित्र

## DEMO TO CHIEF OF DEFENCE STAFF



Members of the Aarogya Maitri team displaying to Chief of Defence Staff





# प्रोजेक्ट आरोग्य लवोणे

## DEMONSTRATION DURING G20



During G20 Event, Tedros Adhanom Ghebreyesus, Director - General, WHO accompanied by Hon'ble Minister of Health from India, Shri Mansukh L. Mandaviya at the BHISHM Cube Exhibits



During G20 Event, Hon'ble Minister of Health from Japan, Katsunobu Kato visiting the BHISHM Cube Exhibits





# प्रोजेक्ट आरोग्य लवोत्तरो

## BHISHM CUBES AT AYODHYA



BHISHM Cubes were deployed for the 'Pran-Pratishtha' ceremony, in Ayodhya, providing on-site treatment, capitalising on the critical golden hour.





# प्रोजेक्ट आरोग्य मैत्री

## BHISHM CUBES AT AYODHYA

In a timely medical intervention, BHISHM Cube - Project Aarogya Maitri Team saved a devotee who suffered a heart attack while attending the 'Pran-Pratishtha' event at the Ram temple, Ayodhya



Mobile  
Modular  
Trauma Kit







# प्रोजेक्ट आरोग्य लवोणे



## EVERY LIFE MATTERS





# प्रोजेक्ट आरोग्य लवोरो

## READY TO SAVE LIVES ANYTIME! EVERYTIME!



A MADE IN INDIA  
PRODUCT FOR THE  
WORLD





# प्रॉजेक्ट आरोग्य लोको



**HLL Lifecare Limited, Noida**  
B-14A, Sector-62, Noida- 201301, Uttar Pradesh, India  
Ph: +91 -120-4071500, Fax : +91-120-4071513

Sales : +91 7824001069  
E-Mail : bhishm@lifecarehll.com